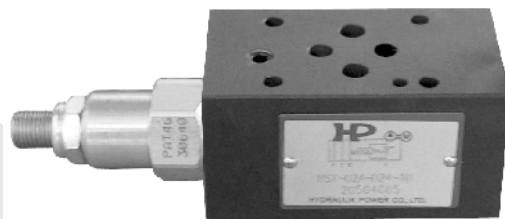


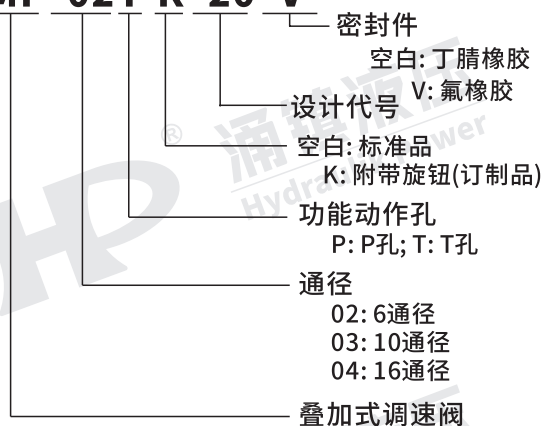
## 叠加式调速阀(20系列)

MF系列是压力补偿型叠加式调速阀，能维持稳定的流量，不随系统压力(负载)而变化。用在控制液压回路中的流量，从而精确地控制执行元件的速度。

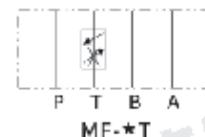
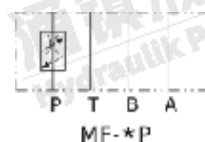


### 型号说明

#### MF-02 P K -20 -V



### 液压符号



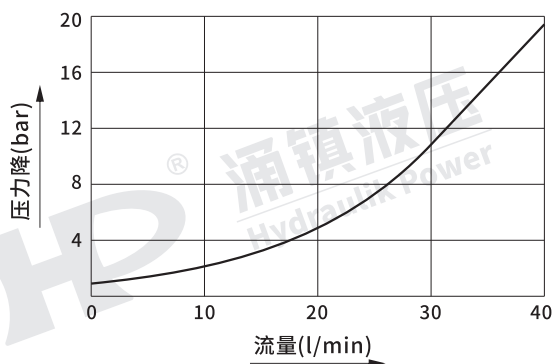
### 规格表

型号	最高压力 (bar)	额定压力 (bar)	额定流量 (l/min)
MF-02*-20	315	250	23
MF-03*-20			45
MF-04*-20			95

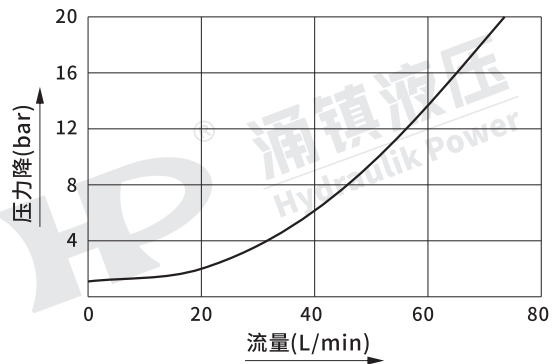
### 特性曲线

#### 流量-压力降特性曲线

MF-02\*

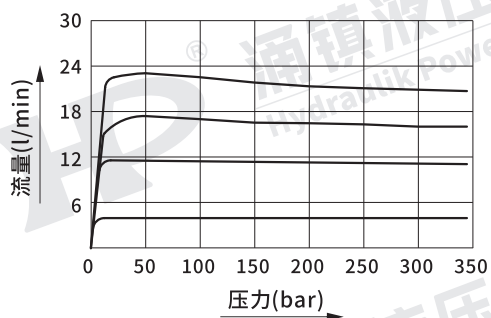


MF-03\*

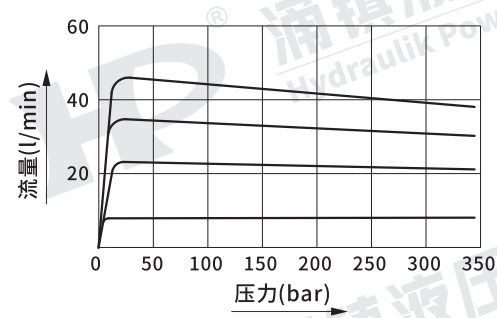


## ● 流量特性曲线

### MF-02★



### MF-03★

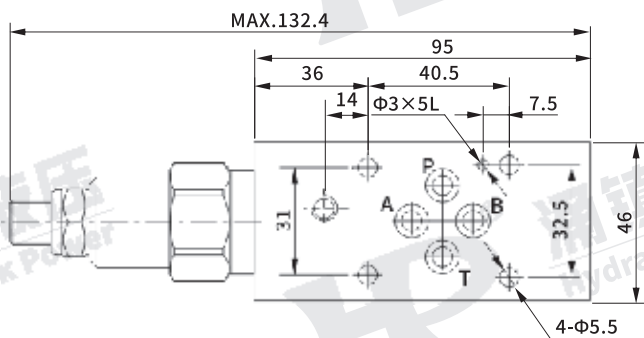
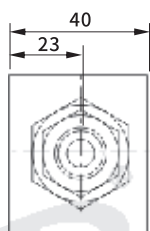


## 外形尺寸图

单位: mm

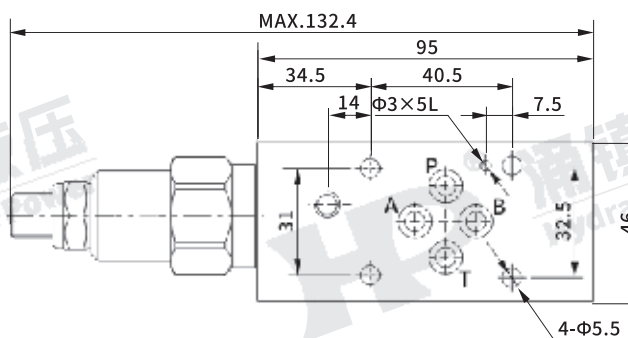
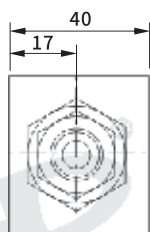
### ● MF-02P-20

安装面: ISO 4401-AB-03-4-A



### ● MF-02T-20

安装面: ISO 4401-AB-03-4-A



### ● MF-03P/T-20

安装面: ISO 4401-AC-05-4-A

